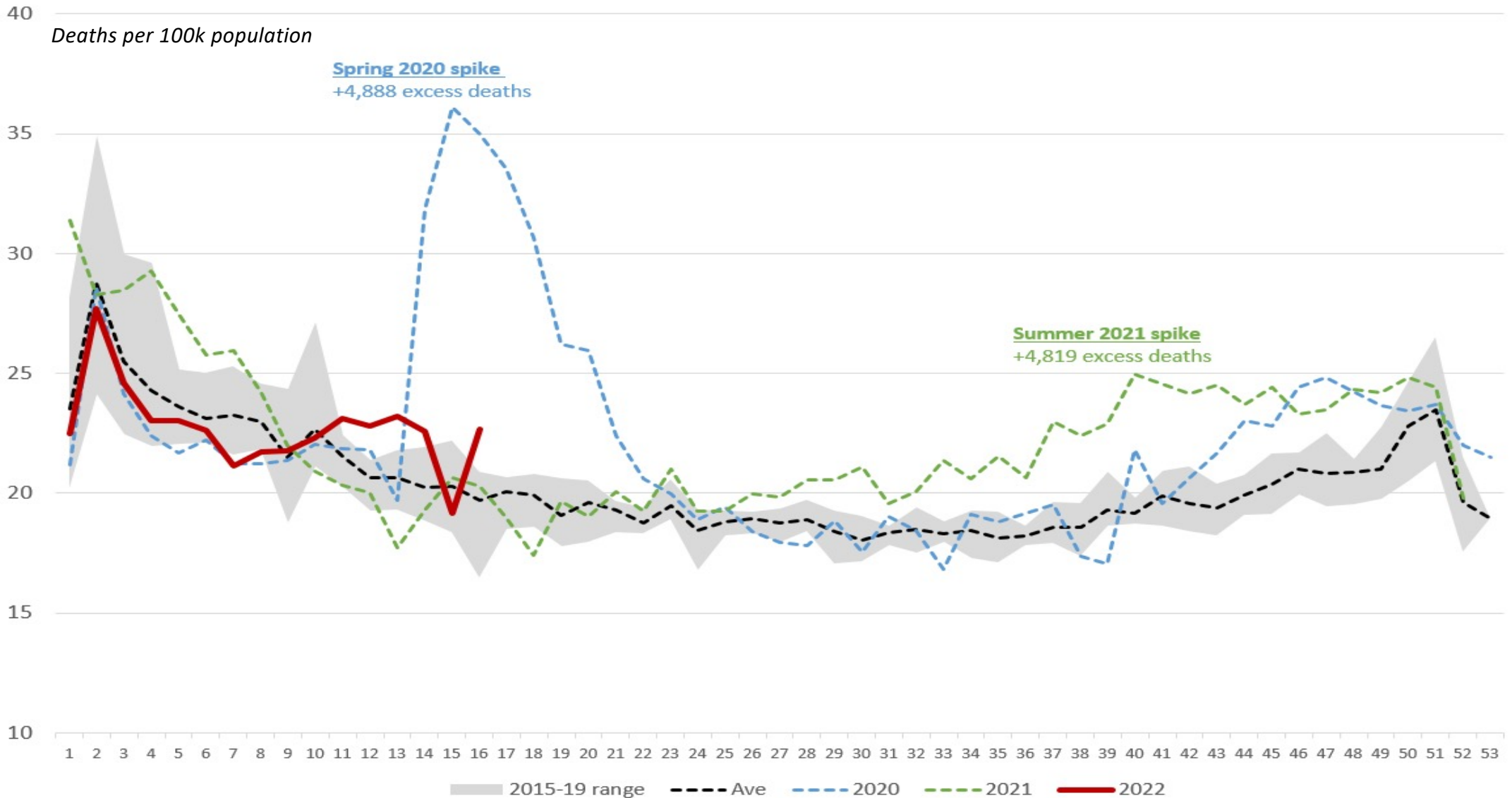


Scotland: All-cause mortality, 2022 Week 16

Data: National Records of Scotland
Summary always available: www.ScottishUnity.org

Overall

Versus the 2015-19 average, Week 15 had dropped to **-5%** → which we wondered was related to Easter reporting. Week 16 comes in at **+16%** (175 deaths above average). In 2021 post Dose-2 we saw 32 continuous weeks of excess – so far 2022 shows the same trend post ‘Booster’



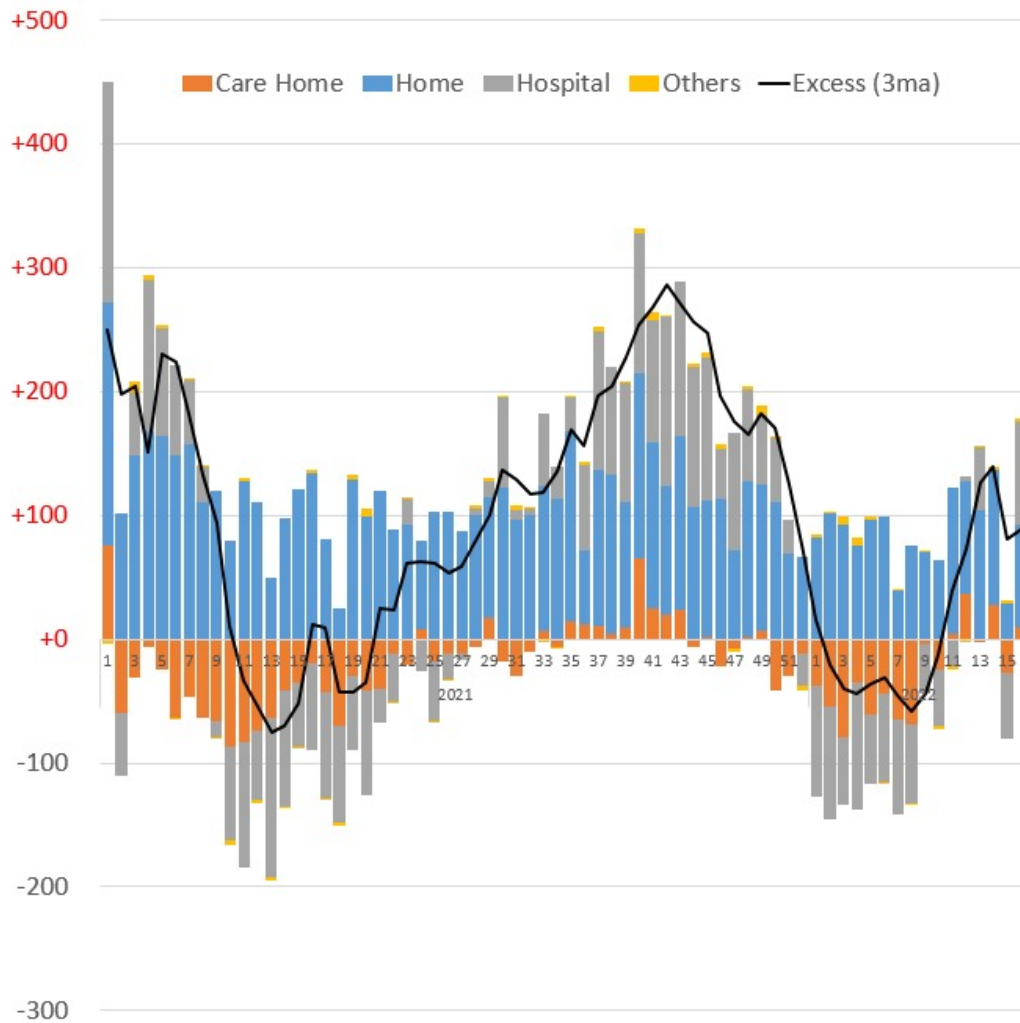
Scotland: All-cause mortality, 2022 Week 16

Data: National Records of Scotland
Summary always available: www.ScottishUnity.org

Excess mortality by cause of death, by location of death

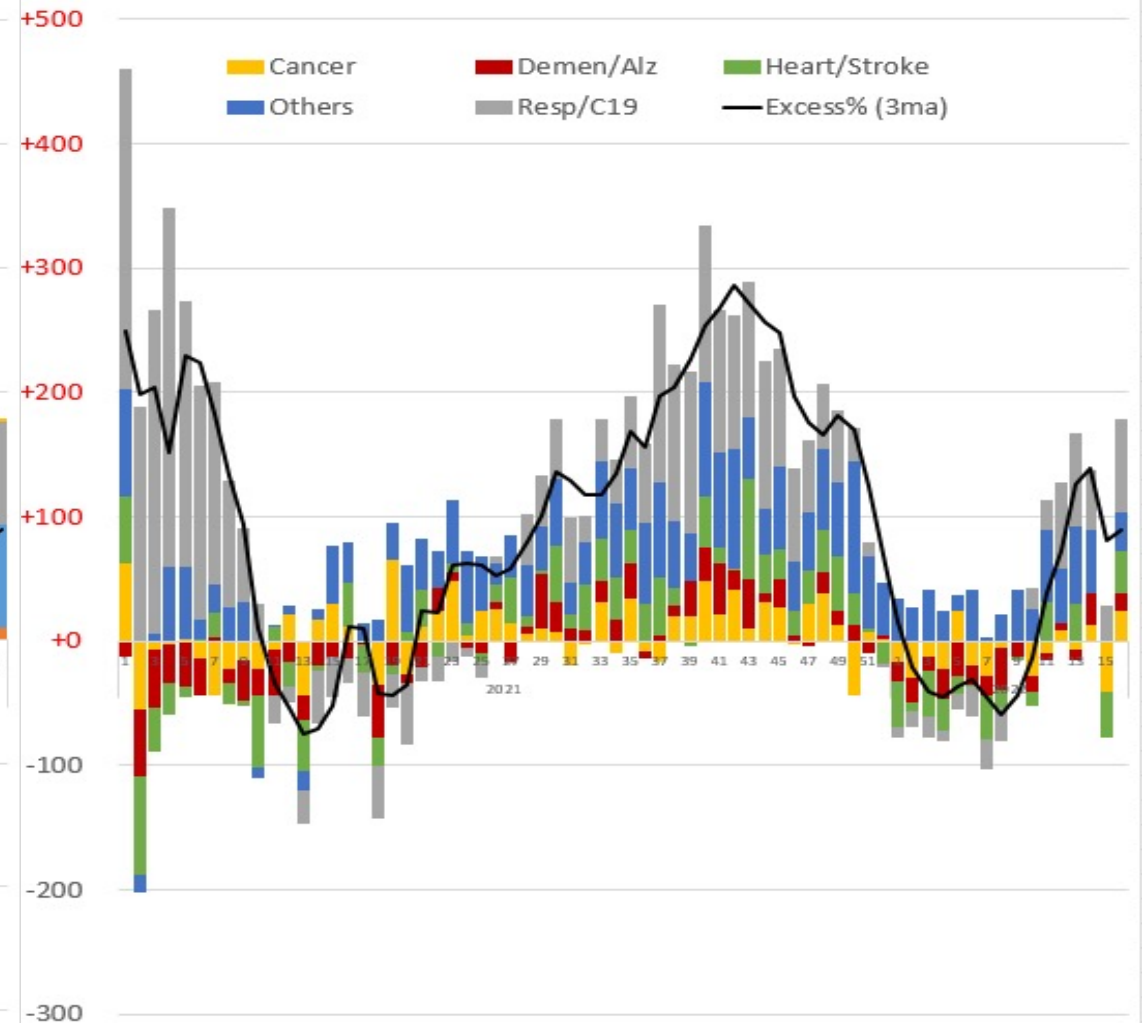
By location

Care homes still showing excess (Dose 4 to over 75s?).
Excess death 'at home' remains the vast majority



By cause of death

The cause of the recent excess has been mainly 'Others',
but now more spread across other causes



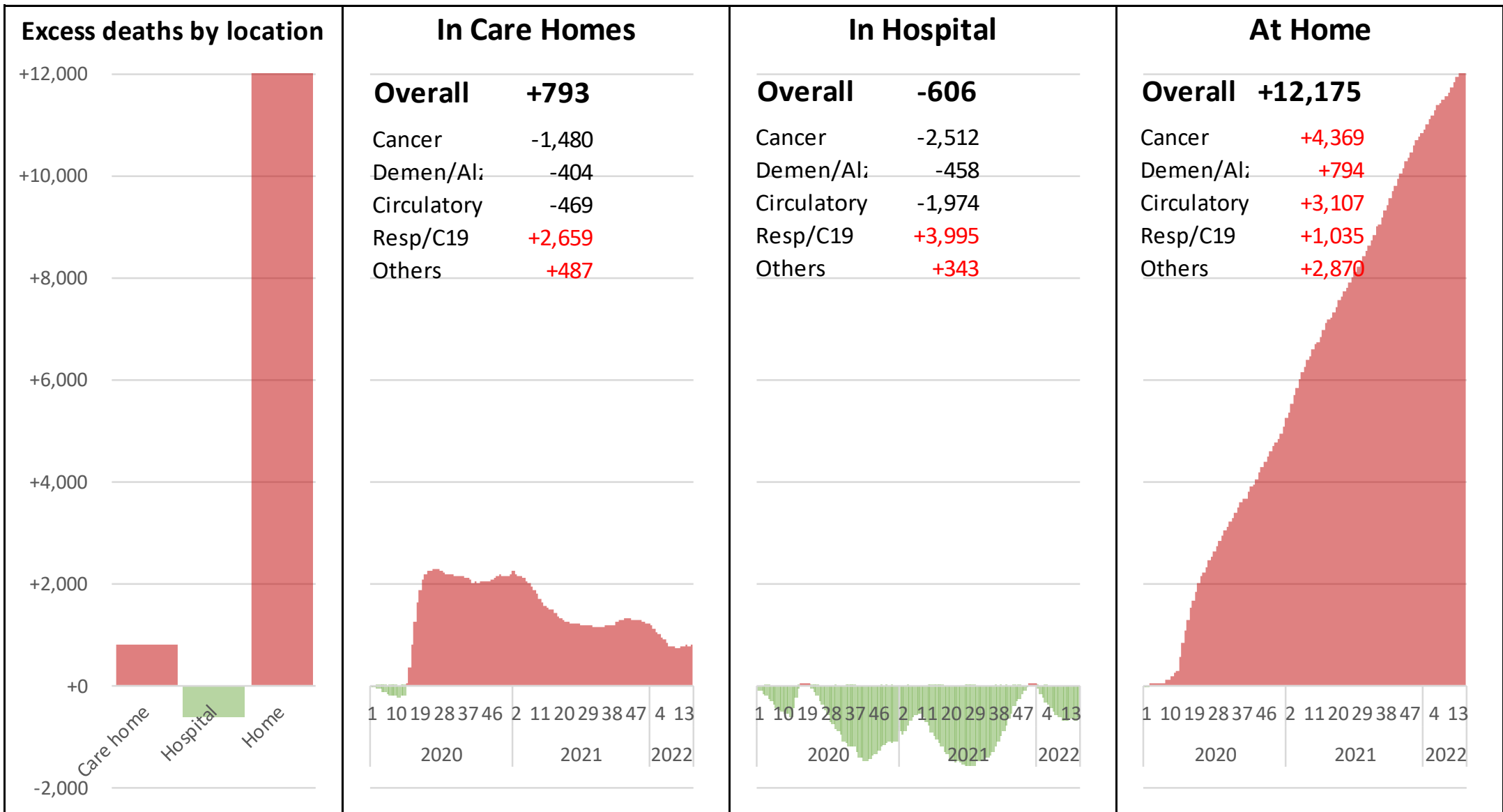
Scotland: All-cause mortality, 2022 Week 16

Data: National Records of Scotland
Summary always available: www.ScottishUnity.org

“Save the NHS, die at home”?

Combine cause and location, and we get the below summary, total **12,362 excess deaths** since beginning of 2020.

12,175 (98.5%) of those excess deaths throughout the ‘pandemic’ have been from **people dying at home**



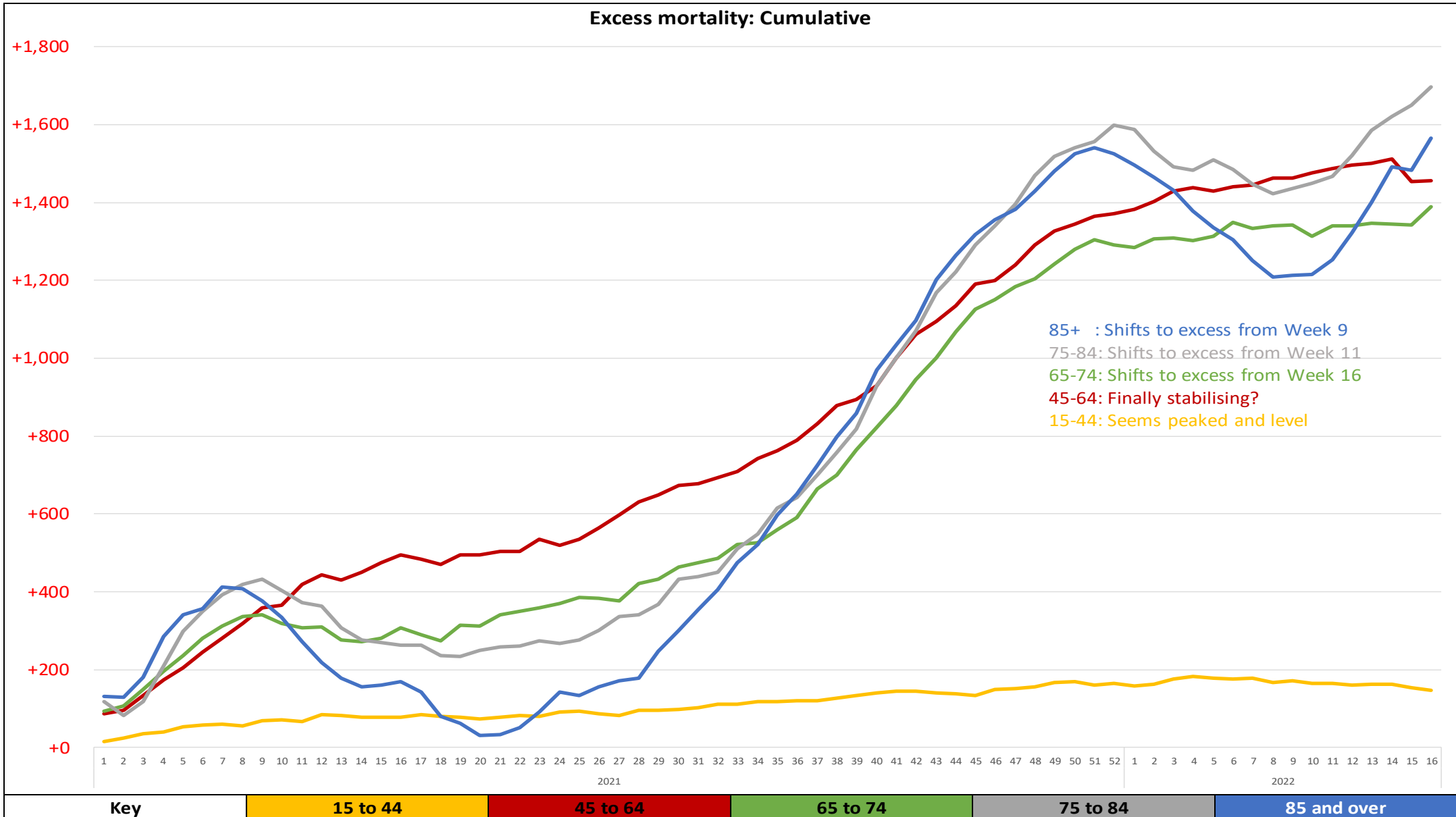
Scotland: All-cause mortality, 2022 Week 16

Data: National Records of Scotland
Summary always available: www.ScottishUnity.org

Total & excess mortality by age group

Last year – around 12 weeks post Dose 2 – we saw excess mortality first in 85+, then consecutively in younger ages

Same pattern this year – 85+ moved to excess week 9, then 75-84 in week 11, now 65-74 moved to uptrend



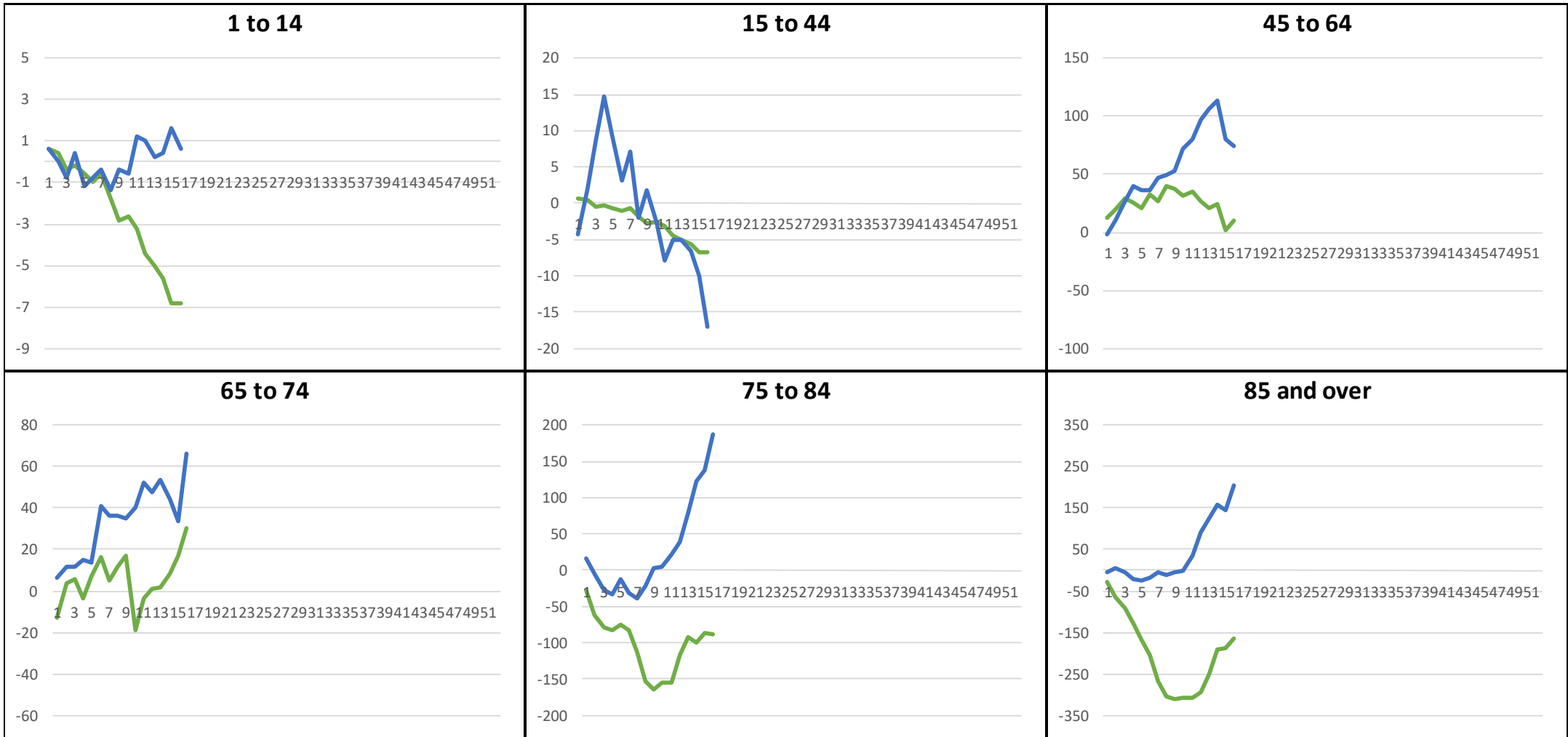
Scotland: All-cause mortality, 2022 Week 16

Data: National Records of Scotland
Summary always available: www.ScottishUnity.org

2022 Cumulative excess mortality by Sex & Age group

These charts split out cumulative excess by male and female.

The excess is predominantly happening in men. Ladies now seeing an uptrend in the groups 75 and over (coincidentally aligned with Dose 4), but men seeing significant and rising excess in 65 to 74 and 45 to 64.



Scotland: All-cause mortality, 2022 Week 16

Data: National Records of Scotland
Summary always available: www.ScottishUnity.org

Cumulative excess mortality in 2022 by cause and location

Starting the year with negative excess, we are now cumulatively positive for the year.

Deaths at home, and causes are 'Others'. Note Respiratory/C19 now in excess for the year, despite all the 'protection'

	Care home	Home	Hospital	Others	Total
Cancer	-288	+441	-304	+3	-148
Demen/Alz	-195	+95	-59	+0	-159
Circulatory	-146	+370	-358	+8	-126
Respiratory/C19	+172	+53	-26	+3	+202
Others	+30	+370	+118	+7	+525
Total	-427	+1,329	-629	+21	+294

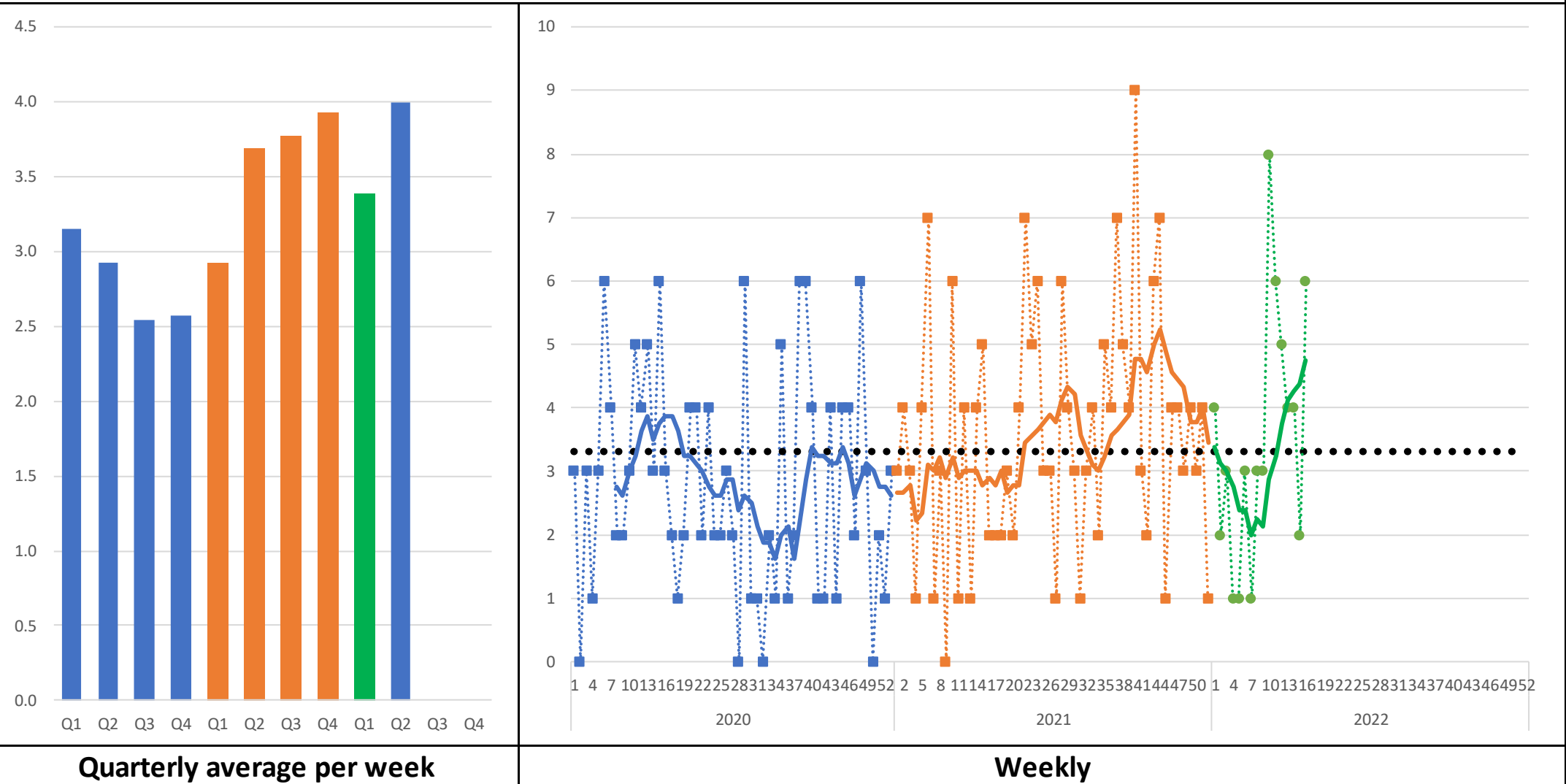
Scotland: All-cause mortality, 2022 Week 16

Data: National Records of Scotland
Summary always available: www.ScottishUnity.org

Child mortality (<1 year old)

Another high week after the drop over Easter. We've had several high weeks, and the moving average is now approaching the high we saw during last year.

Scotland: Mortality of <1 age group

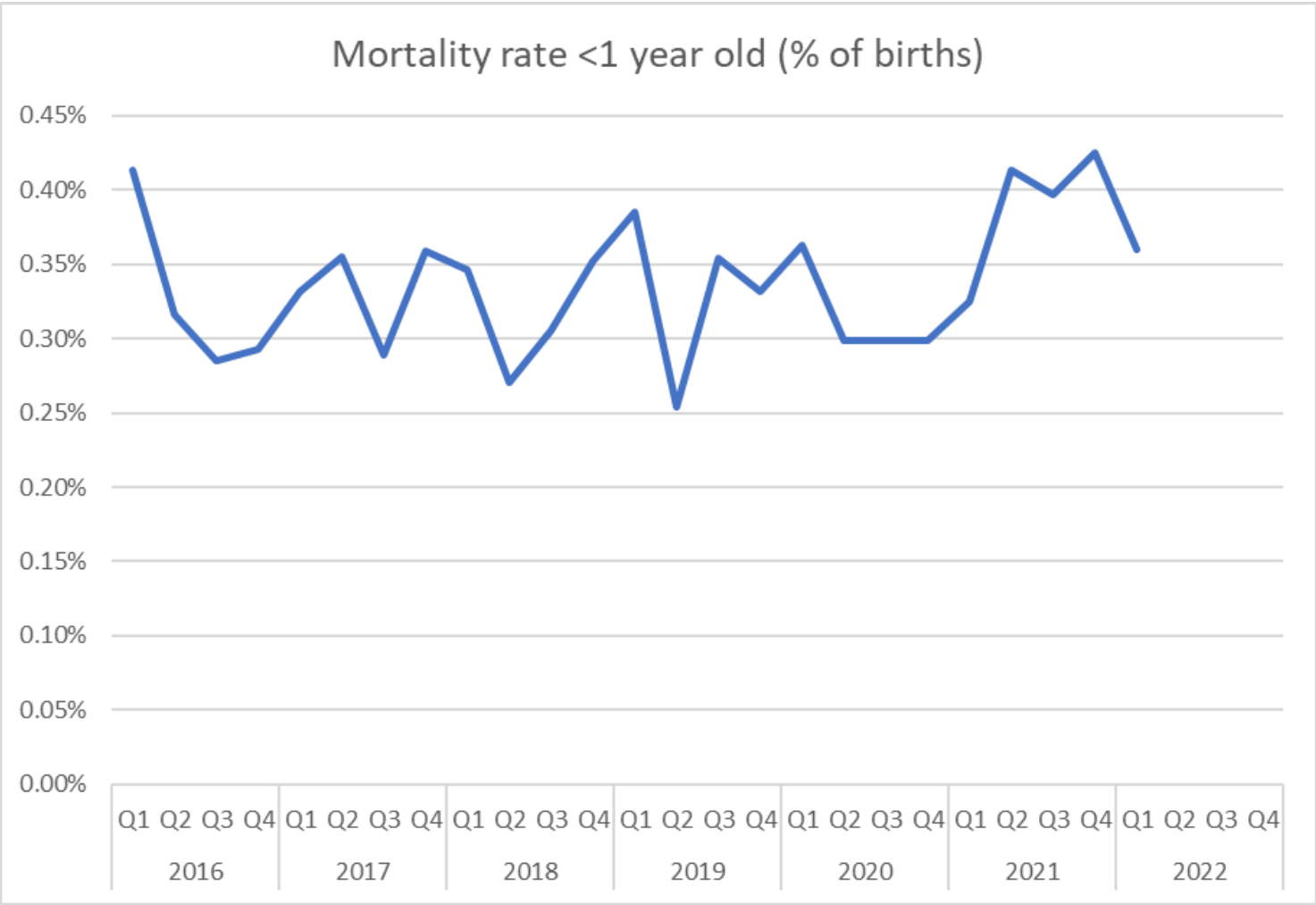


Scotland: All-cause mortality, 2022 Week 16

Data: National Records of Scotland
Summary always available: www.ScottishUnity.org

Child mortality (<1 year old)

However the birth rate for 2022-Q1 was also updated, and was quite high. So when looking at 2022 Jan-Mar deaths as a percentage of births, the number looks in the normal range. Very apparent that 2021 Apr-Dec was significantly above normal.



Scotland: All-cause mortality, 2022 Week 16

Data: National Records of Scotland
Summary always available: www.ScottishUnity.org

Child mortality (1 to 14 years old)

Overall is keeping normal

Scotland: Mortality of 1-14 age group

